

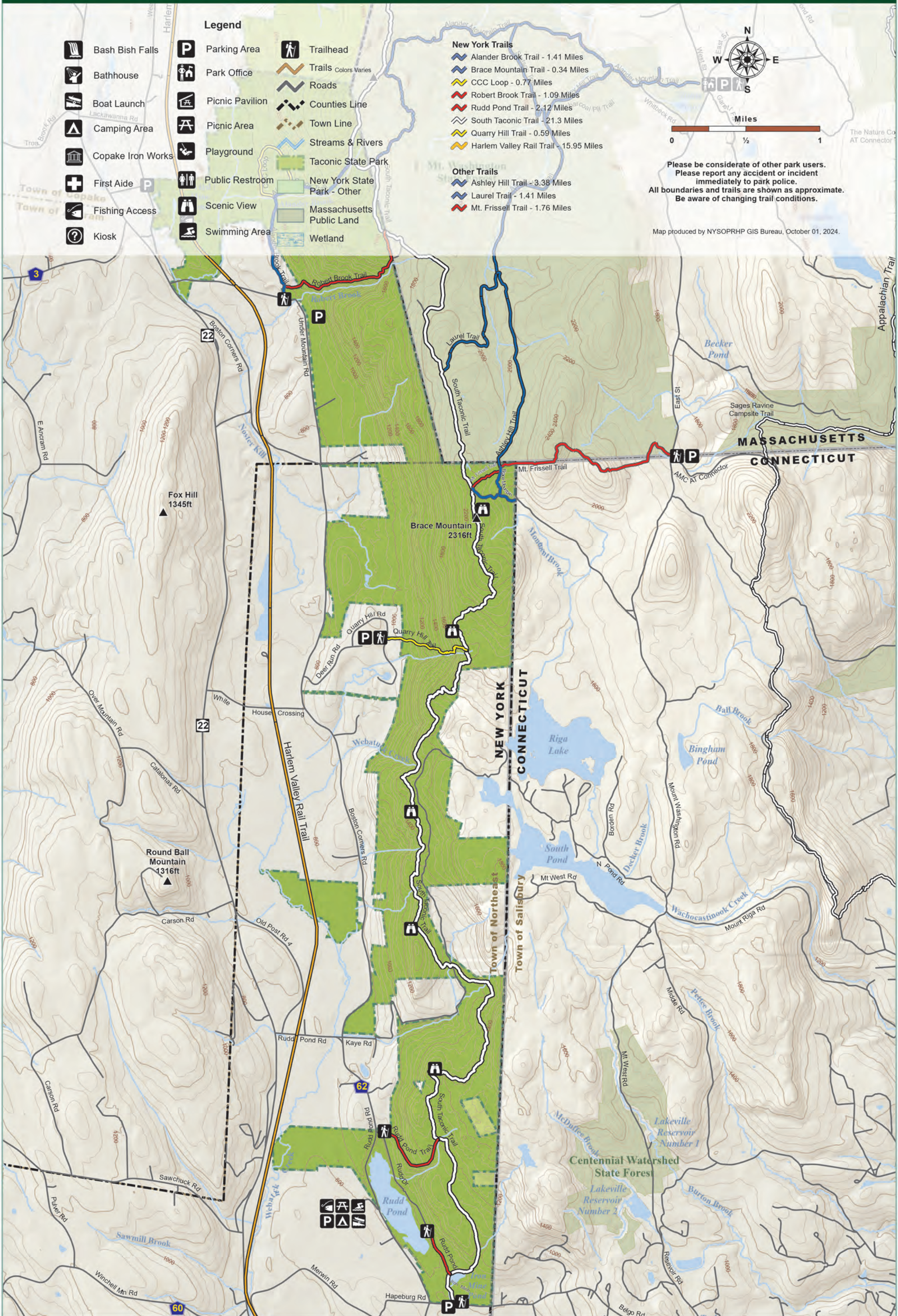
Taconic State Park Southern Section

253 Route 344, Copake Falls, NY 12517

Copake Falls Area: (518) 329 - 3993
 Regional Office: (845) 889 - 4100
 Park Police: (845) 889 - 4100
 In Case of Emergency: 911



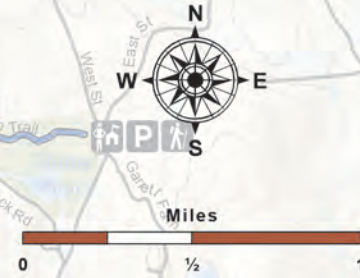
New York State
 Parks, Recreation and
 Historic Preservation



Legend

- | | | | | | |
|--|-------------------|--|---------------------------|--|-----------------------------|
| | Bash Bish Falls | | Parking Area | | Trailhead |
| | Bathhouse | | Park Office | | Trails Colors Varies |
| | Boat Launch | | Picnic Pavilion | | Roads |
| | Camping Area | | Picnic Area | | County Line |
| | Copake Iron Works | | Playground | | Town Line |
| | First Aid | | Public Restroom | | Streams & Rivers |
| | Fishing Access | | Scenic View | | Taconic State Park |
| | Kiosk | | Swimming Area | | New York State Park - Other |
| | | | Massachusetts Public Land | | Wetland |

- ### New York Trails
- Alander Brook Trail - 1.41 Miles
 - Brace Mountain Trail - 0.34 Miles
 - CCC Loop - 0.77 Miles
 - Robert Brook Trail - 1.09 Miles
 - Rudd Pond Trail - 2.12 Miles
 - South Taconic Trail - 21.3 Miles
 - Quarry Hill Trail - 0.59 Miles
 - Harlem Valley Rail Trail - 15.95 Miles
- ### Other Trails
- Ashley Hill Trail - 3.38 Miles
 - Laurel Trail - 1.41 Miles
 - Mt. Frissell Trail - 1.76 Miles



Please be considerate of other park users.
 Please report any accident or incident immediately to park police.
 All boundaries and trails are shown as approximate.
 Be aware of changing trail conditions.

Map produced by NYSOPRHP GIS Bureau, October 01, 2024.