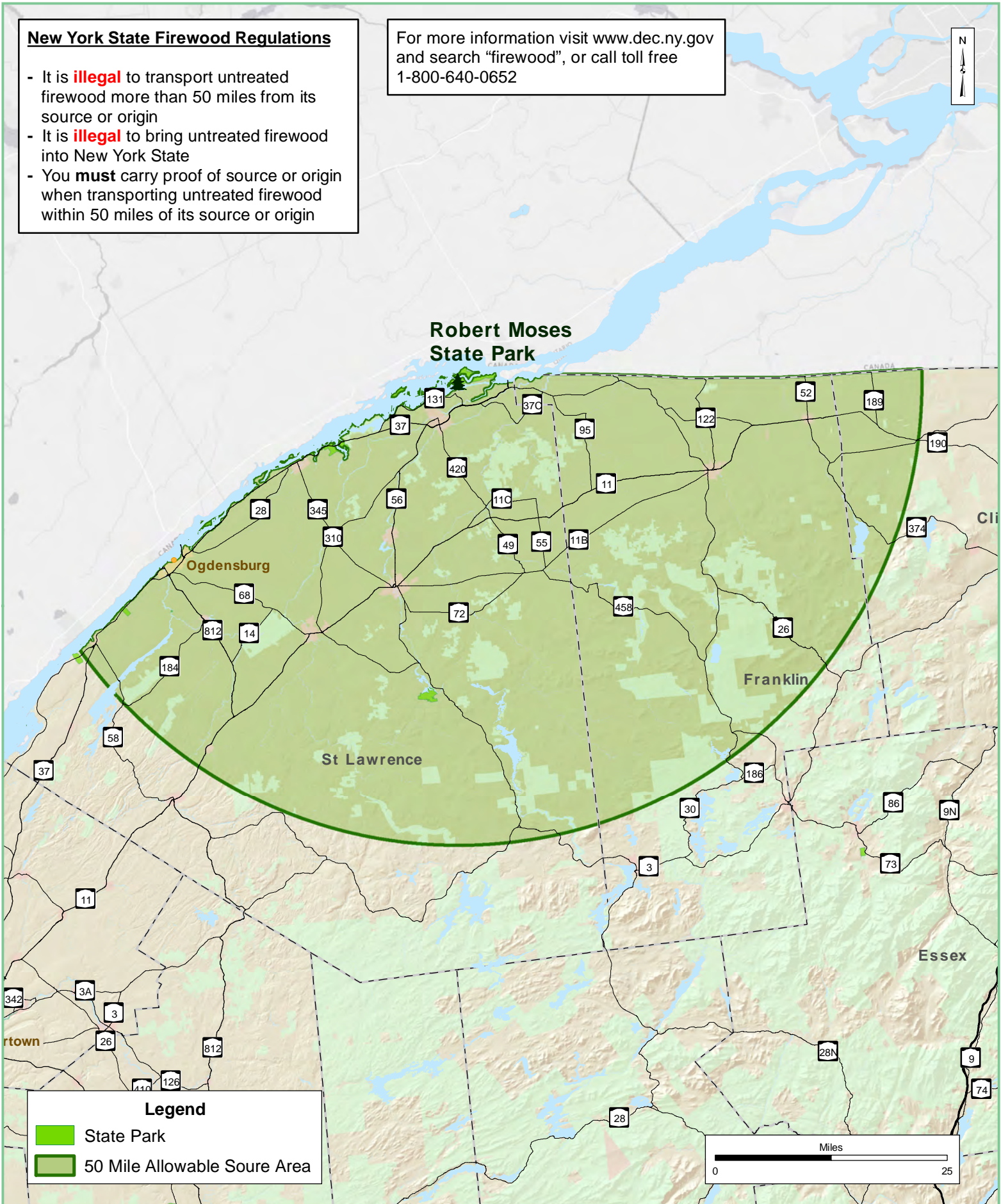




### New York State Firewood Regulations

- It is **illegal** to transport untreated firewood more than 50 miles from its source or origin
- It is **illegal** to bring untreated firewood into New York State
- You **must** carry proof of source or origin when transporting untreated firewood within 50 miles of its source or origin

For more information visit [www.dec.ny.gov](http://www.dec.ny.gov) and search "firewood", or call toll free 1-800-640-0652



#### Legend

-  State Park
-  50 Mile Allowable Source Area

## Untreated Firewood Source Area Robert Moses State Park



Parks, Recreation  
and Historic  
Preservation