

# Disc Golf Rules (per the DGA)

## SAFETY FIRST

Never throw when players or park users are within range. Always give park users the right of way. Be aware of your surroundings and environment.

## Tee Throws

Each hole begins with a tee throw. Tee throws must be completed behind the designated tee area.

## Lie

The lie is the spot where the player's previous throw has landed. Mark lie with a mini disc or turn over the thrown disc, directly towards the hole or designated fairway. The player's subsequent throw is made from directly behind the marked lie.

## Throwing Order

The player with the least amount of strokes on the previous hole is the first to tee off on the next hole. After teeing off, the player whose disc is farthest from the hole always throws first.

## Fairway Throws

Fairway throws must be made from directly behind the lie. A run-up and normal follow-through, after release, is allowed, unless the lie is within 10 meters of the target. Any shot within 10 meters of the target requires that the player not move past the lie until the disc is at rest.

## Dogleg (or Mandatory)

A dogleg is one or more designated trees or poles in the fairway that must be passed as indicated by arrows. Until the dogleg is passed the closest foot to the dogleg must be on the lie when the disc is released.

## Completion Of Hole

A disc that comes to rest in the basket or chains constitutes successful completion of that hole.

## Unplayable Lie

Any disc that comes to rest above the ground is considered an unplayable lie. The disc must be thrown from the lie on the ground, directly underneath the unplayable lie, relocated to avoid damage to the vegetation.

## Out Of Bounds

If any area of O.B. is visible between the disc and O.B. line, then the disc is considered O.B. A throw that lands out of bounds, must be played from a point 3 feet in bounds from where the disc went out of bounds. Permanent water hazards and public roads are always out of bounds.

## Penalties

Recreational players will not be penalized for rule infractions. Other players will keep you honest.

## Course Courtesy

- Remain quiet and avoid unnecessary movements while others are throwing.
- Stand behind the player who is throwing until throw is complete.
- Remove disc from basket after completing the hole.
- Help new players learn the rules.
- Allow faster groups to play through when possible.
- Pick up trash and put in proper receptacles.
- Do not alter the course (trees, bushes, etc.) in any way.

Disc Golf Association: [www.discgolf.com](http://www.discgolf.com)

Professional Disc Golf Association: [www.pdga.com](http://www.pdga.com)

Disc Golf Course Review: [www.dgcoursereview.com](http://www.dgcoursereview.com)



**Parks, Recreation  
and Historic Preservation**

## LAKE ERIE STATE PARK

5838 Route 5  
Brocton, NY 14716

Phone: 716-792-9214  
Fax: 716-792-4275

# LAKE ERIE STATE PARK

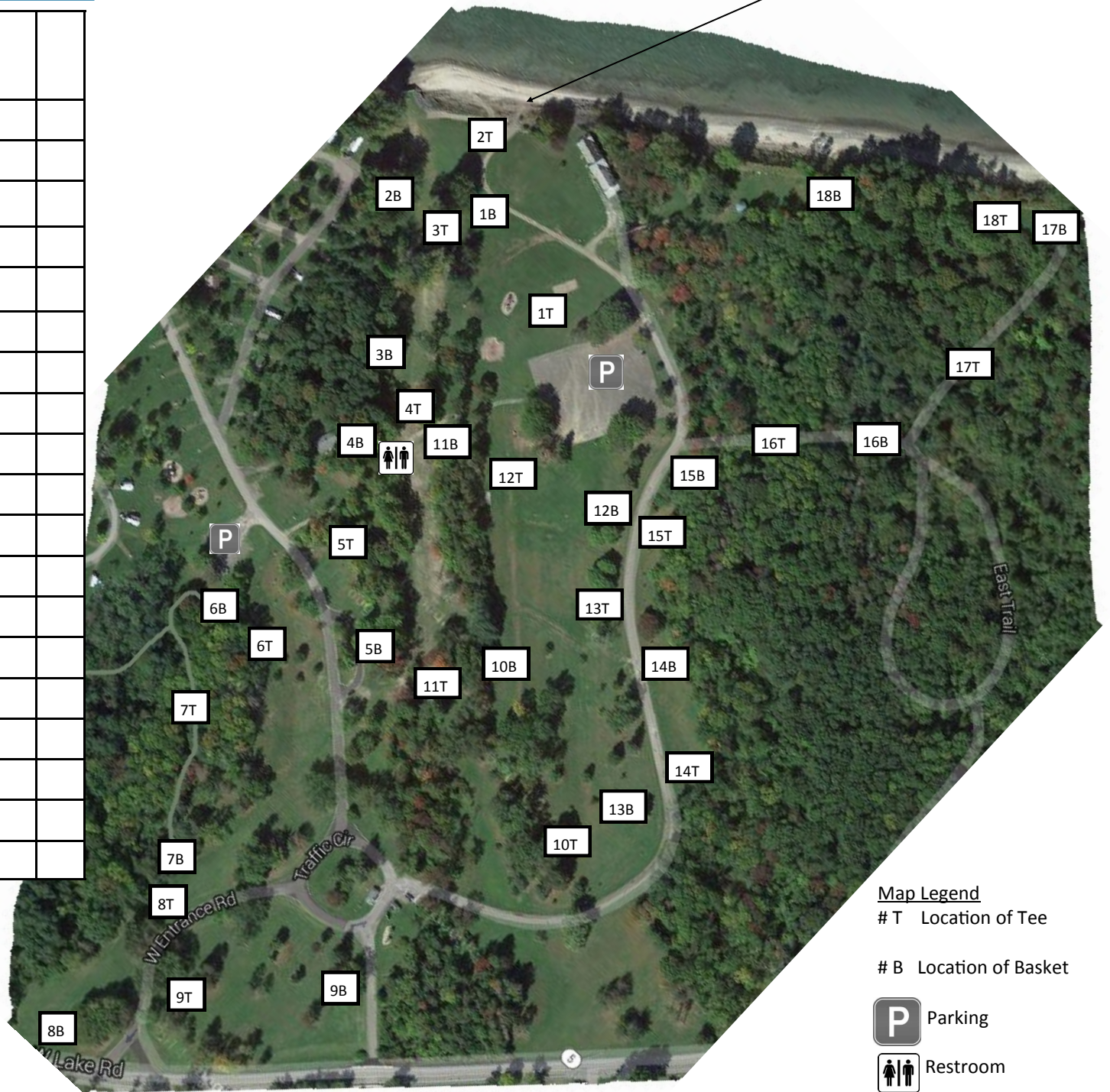


An 18-hole course designed by Paul Stephens that meanders through beautiful Lake Erie State Park featuring panoramic views of Lake Erie on a course that is both scenic and challenging with Recreational (red), Amateur (white), and Expert (blue) tees.

# Course Map

**SAFETY NOTE!!!**If your disc goes over the bluff cliff, you must retrieve it via the beach access—DO NOT CLIMB the CLIFF!

Hole #	Approx Dist (White)	Approx Dist (Red)	Par				
1	331	282	3				
2	226	220	3				
3	394	285	4				
4	295	230	3				
5	289	223	3				
6	164	151	3				
7	299	240	3				
8	302	230	3				
9	371	289	4				
10	404	299	4				
11	443	417	4				
12	246	223	3				
13	374	362	3				
14	386	347	3				
15	207	177	3				
16	220	154	3				
17	233	200	3				
18	351	295	4				
		<b>TOTAL</b>	<b>59</b>				



⇒ On hole 18, please be courteous of any weddings that may be occurring at the gazebo

### Map Legend

- # T Location of Tee
- # B Location of Basket
- P** Parking
- Restroom