

Grafton Lakes State Park

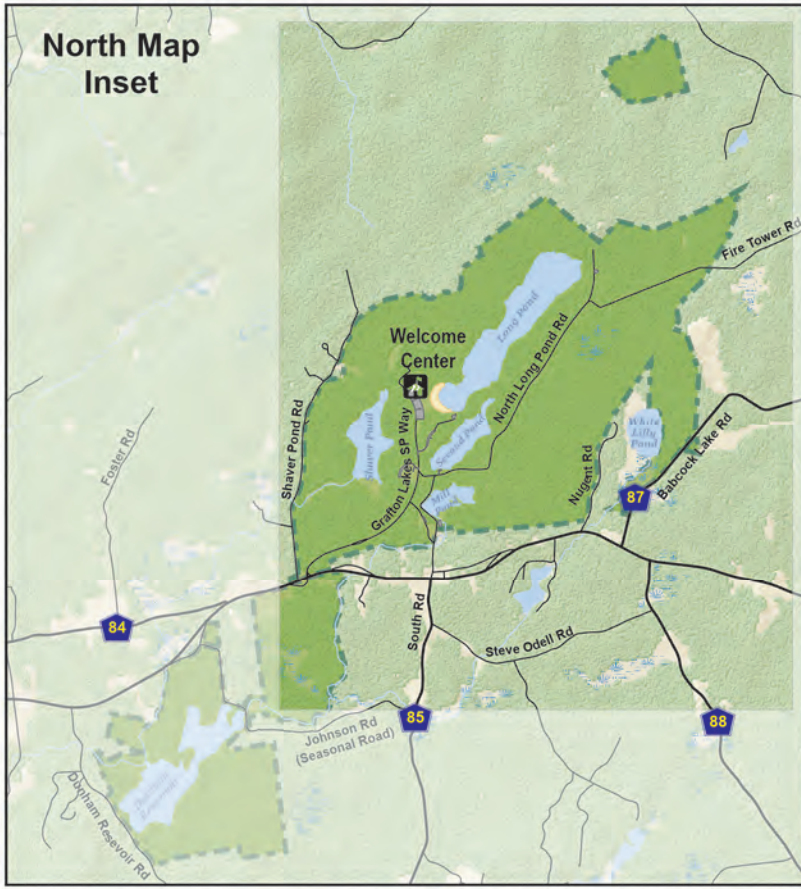
254 Grafton Lakes State Park Way
Cropseyville, NY 12052

In Case of Emergency: 911
Park Police: (518) 584-2004
Welcome Center: (518) 279-1155



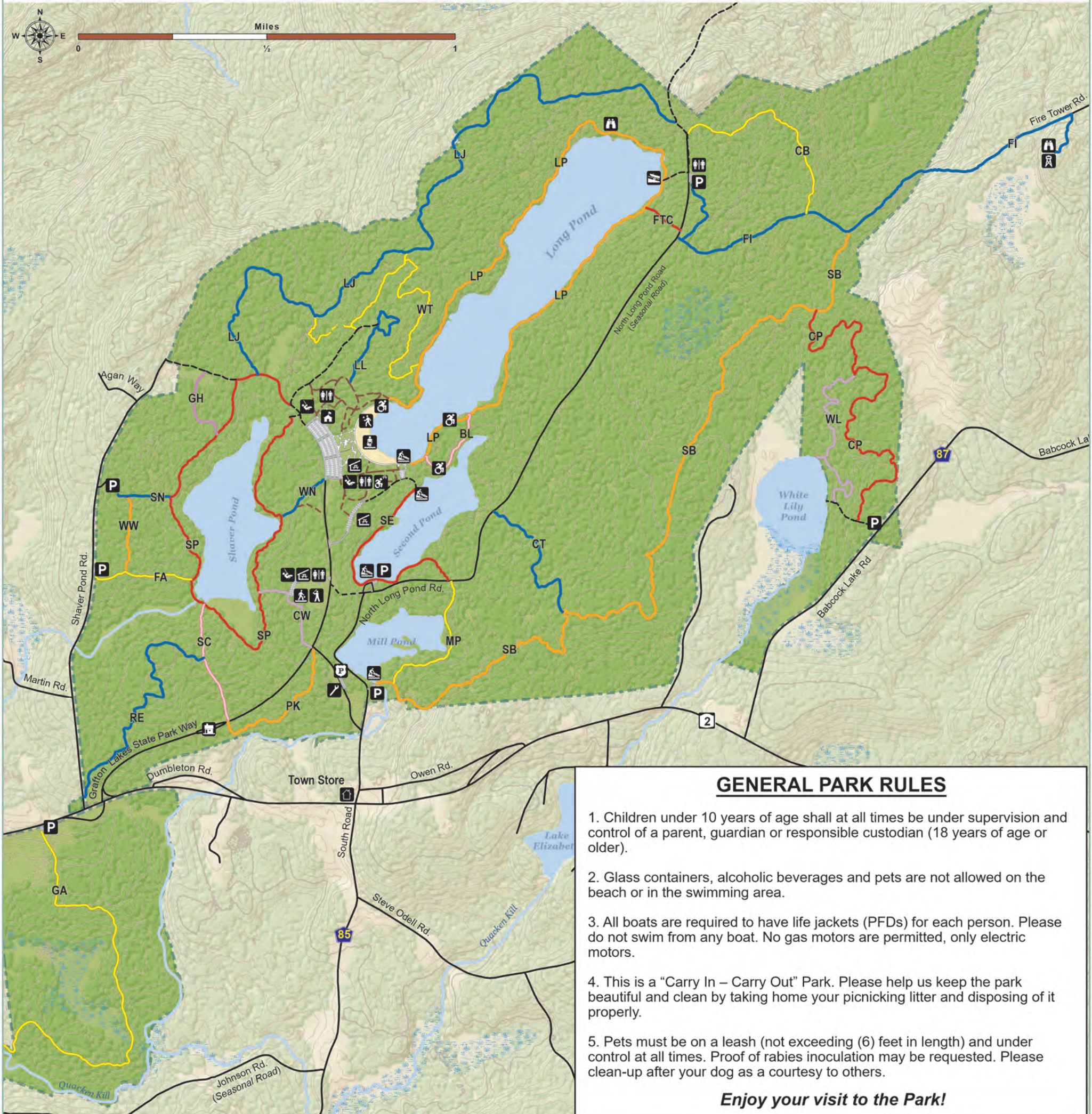
New York State
Parks, Recreation and
Historic Preservation

Map produced by NYSOPRHP GIS Bureau, November 25, 2024.



- | | | | |
|------------------------|------------------|----------------|-------------------------------------|
| Accessible | First Aid | Scenic View | Unimproved Road (no vehicle access) |
| Accessible Picnic Area | Hand Boat Launch | Softball Field | Unmarked Trail |
| Basketball Court | Maintenance | Swimming Beach | 100 Foot Contour |
| Bathhouse | Park Police | Town Store | 10 Foot Contour |
| Boat Launch | Parking Area | Volleyball | Grafton Lakes State Park |
| Boathouse/Rental | Picnic Area | Welcome Center | Beach |
| Concession Stand | Picnic Pavilion | Boardwalk | Water |
| Entrance Booth | Playground | Road | Wetland |
| Fire Tower | Public Restroom | | |

- ### Trail Legend
- | | | |
|---|---------------------------------|------------------------------------|
| BL-Beaver Lodge - 0.24 Miles | GA-Gartlers - 1.35 Miles | SC-Scout - 0.34 Miles |
| CB-Chet Bell - 0.60 Miles | GH-Granville Hicks - 0.22 Miles | SE-Second Pond - 0.63 Miles |
| CP-Conklin Pass - 1.30 Miles | LJ-Little Johnny's - 2.20 Miles | SN-Shaver Pond Nature - 0.14 Miles |
| CT-Crossover - 0.45 Miles | LL-Lollipop - 0.38 Miles | SP-Shaver Pond - 1.90 Miles |
| CW-Conklin Way - 0.27 Miles | LP-Long Pond - 2.50 Miles | WL-White Lily - 0.66 Miles |
| FA-Fishing Access - 0.27 Miles | MP-Mill Pond - 0.40 Miles | WN-Woodland Nature - 0.16 Miles |
| FI-Fire Tower Interpretive - 1.54 Miles | PK-Perkin's - 0.41 Miles | WT-Water Tower - 1.12 Miles |
| FTC-Fire Tower Connector - 0.12 Miles | RE-Red Eft - 0.78 Miles | WW-Wildwood - 0.21 Miles |
| | SB-Spruce Bog - 2.55 Miles | |



GENERAL PARK RULES

- Children under 10 years of age shall at all times be under supervision and control of a parent, guardian or responsible custodian (18 years of age or older).
- Glass containers, alcoholic beverages and pets are not allowed on the beach or in the swimming area.
- All boats are required to have life jackets (PFDs) for each person. Please do not swim from any boat. No gas motors are permitted, only electric motors.
- This is a "Carry In - Carry Out" Park. Please help us keep the park beautiful and clean by taking home your picnicking litter and disposing of it properly.
- Pets must be on a leash (not exceeding (6) feet in length) and under control at all times. Proof of rabies inoculation may be requested. Please clean-up after your dog as a courtesy to others.

Enjoy your visit to the Park!