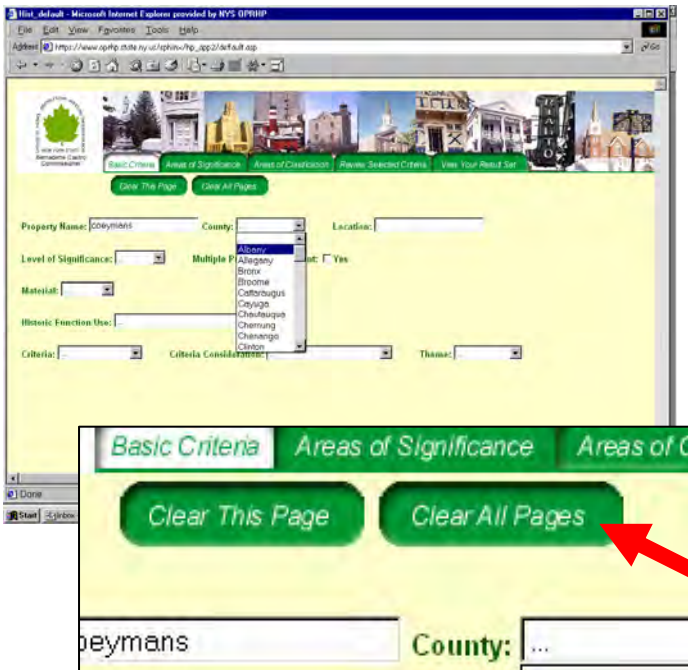
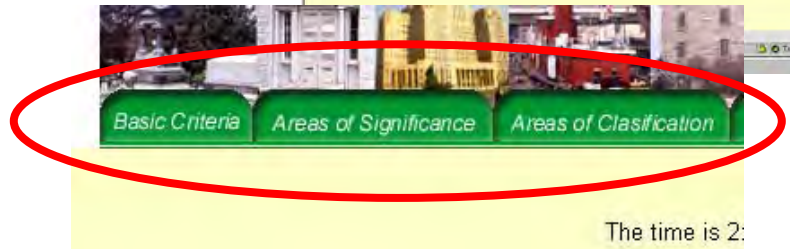
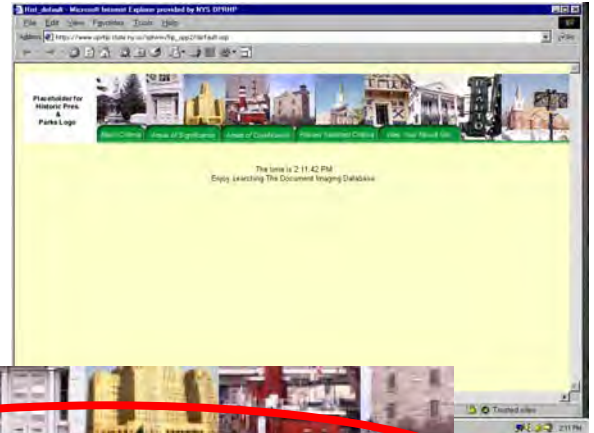


New York's State and National Registers of Historic Places Document Imaging Project

To search for a property in New York State that is listed in the registers you will enter some basic information. Begin by selecting from the first three tabs found at the top of the screen. Each provides various search options based on information contained in the nomination files. We recommend that you begin with a broad search using the county and/or property location (city, town and/or village), the name or a portion of the name of a property. You can also search by historic context(s) using the second tab or architectural style(s) using the third tab. You may select as many options from all three tabs as you like. However, the more information you enter the narrower the search will be and fewer results may be returned.



BASIC CRITERIA

From this tab you can enter the name or a portion of a name of the property.

You can select a specific **COUNTY** or enter the name of a community in the **LOCATION** field.

You can also select from a list of materials, National Register criteria, and/or historic uses.

The Multiple Property check box and Theme field are not functioning at this time.

Currently you must also go to this page and select the **CLEAR ALL PAGES** button to begin a new search.

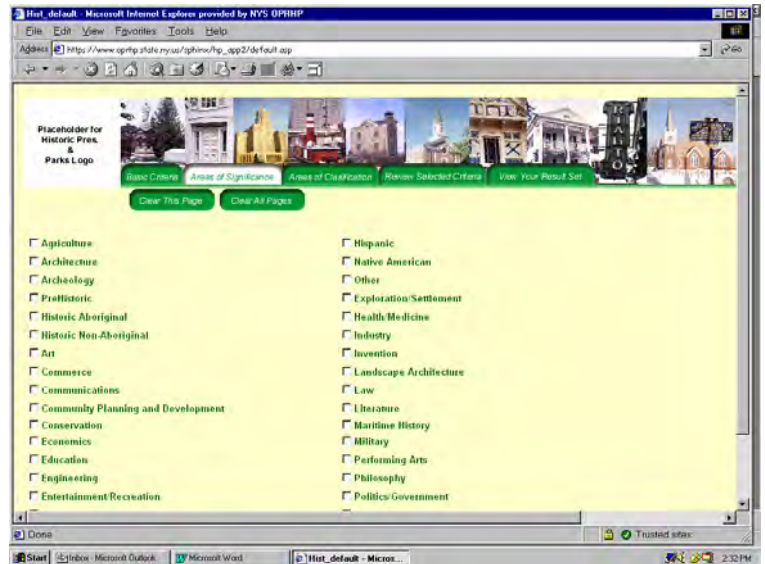
You can select additional search criteria from the tabs labeled **AREAS OF SIGNIFICANCE** and **AREAS OF CLASSIFICATION**.

AREAS of SIGNIFICANCE provide a list of themes associated with designated properties.

AREAS of CLASSIFICATION provide a list of popular architectural styles.

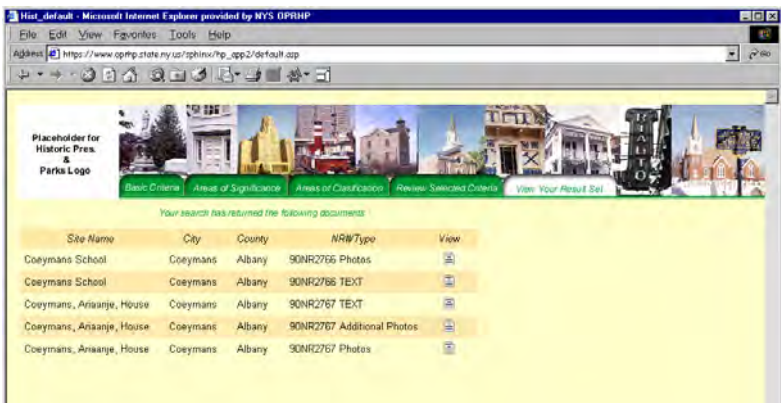
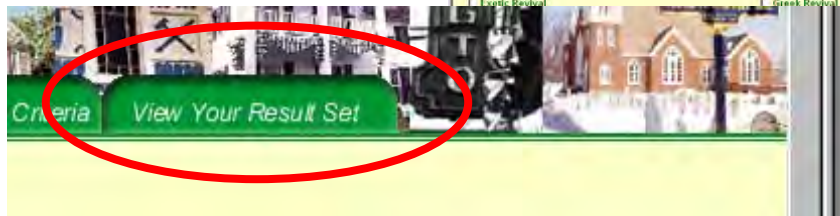
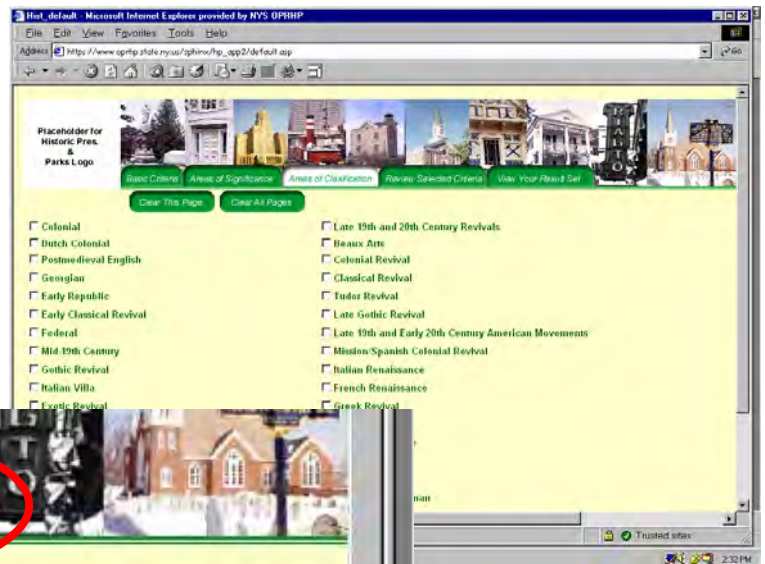
The user can select their search criteria from any one or all of the first three tabs.

Once you have selected your search criteria click on the fifth tab, **VIEW YOUR RESULTS**.



REMEMBER that you can check as many of the areas of significance and or architectural styles you wish, but the more selections made the smaller the potential search results.

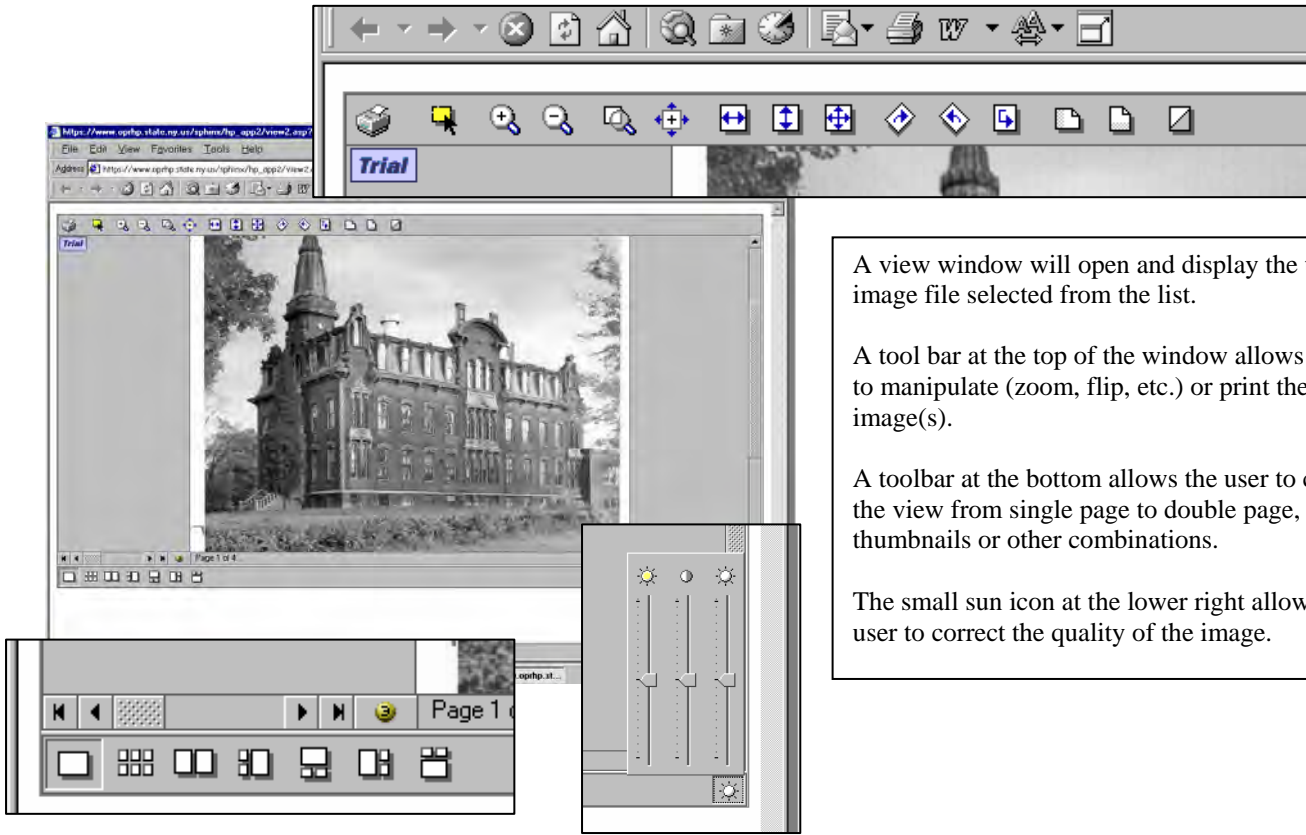
We encourage the user to be broad in their initial searches.



The results of a successful search will be displayed as seen here. Files will be marked as either **TEXT** (*the actual nomination document*) or **PHOTOS** (*photographic images associated with the nomination document*).

Simply click on the **VIEW** icon at the right of the file you wish to see.

Site Name	City	County	NR#Type	View
Coeymans School	Coeymans	Albany	90NR2766 Photos	
Coeymans School	Coeymans	Albany	90NR2766 TEXT	
Coeymans, Ariaanje, House	Coeymans	Albany	90NR2767 TEXT	



A view window will open and display the text or image file selected from the list.

A tool bar at the top of the window allows the user to manipulate (zoom, flip, etc.) or print the image(s).

A toolbar at the bottom allows the user to change the view from single page to double page, thumbnails or other combinations.

The small sun icon at the lower right allows the user to correct the quality of the image.

Site Name	City	County	NR#Type	View
Coeymans School	Coeymans	Albany	90NR2766 Photos	
Coeymans School	Coeymans	Albany	90NR2766 TEXT	
Coeymans, Ariaanje, House	Coeymans	Albany	90NR2767 TEXT	



Selecting a TEXT file works the same way except the images are of the nomination pages.

To go back to the list of projects simply X out of the viewer screen

To go back to the search screens simple select the **BASIC CRITERIA** tab, click on the **CLEAR ALL PAGES** button and enter new search criteria.

